



Traffic Map Help Guide



TABLE OF CONTENTS

Overview.....	3
Mini-map.....	4
Main map.....	5



Overview

The Wisconsin Department of Transportation (WisDOT)'s Traffic Web page is designed to communicate travel conditions along the I-94 North-South Freeway Project corridor.

Users may access traffic speeds, roadway cameras and message sign information, construction and incident alerts, and view open or closed roadways.

Traffic information pertains only to the immediate project corridor shown by the highlighted road segments on the main map. Traffic information is generated by the WisDOT State Traffic Operations Center (STOC), as well as alerts entered by the project team. Traffic speeds are displayed on roadway segments equipped with loop detector equipment, and by averaging speed data where necessary. Map data is updated every two minutes, or when users select the refresh button at bottom of the mini-map. Cameras, message signs, and alerts are shown at their approximate locations.

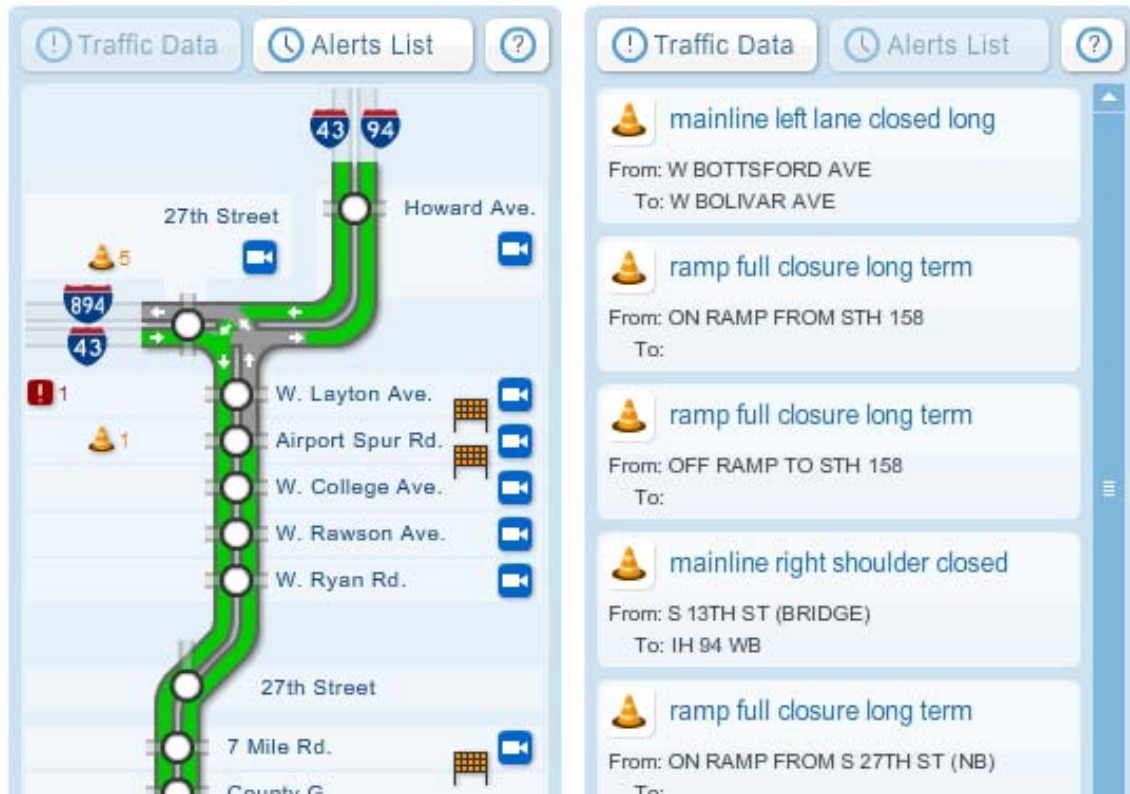
A broadband connection is recommended. Users should have Adobe Flash Player 10.0 or greater installed: (<http://get.adobe.com/flashplayer>). A text version of the traffic data is accessible at top-left of screen for low-bandwidth users and those with special accessibility needs. A mobile page (<http://www.plan94.org/mobile/>) provides speed information formatted for small screen devices, such as smartphones with Internet access.

Regional traffic information outside the project area can be accessed through:

Wisconsin: <http://www.511wi.gov/>

Illinois: <http://www.gcmtravel.com/>

Mini-map

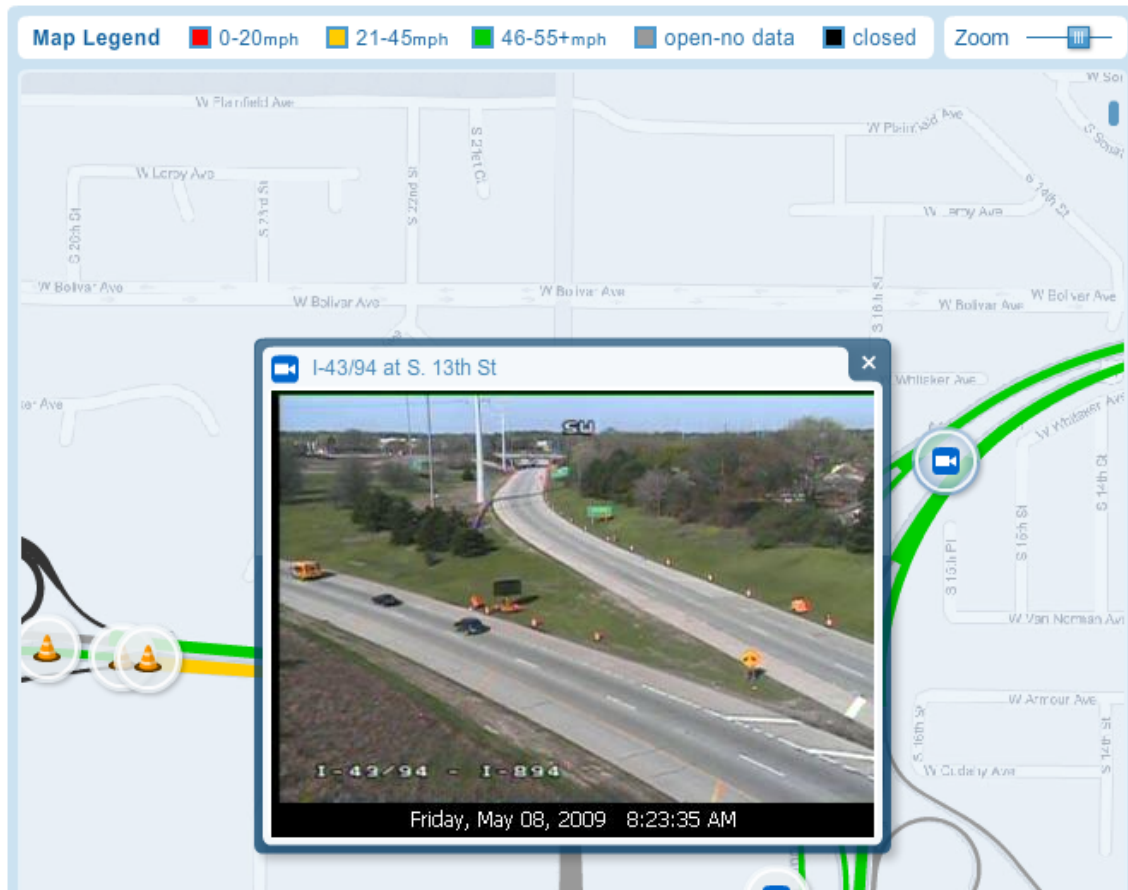


The **mini-map** provides an at-a-glance view of the 35-mile corridor, including:

- Traffic speed information in red, yellow, and green, as detailed in the map legend above the main map (grey indicates no available speed data)
- Camera, message sign, and alert icons can be selected to navigate to those locations on the main map; numbers beside alert icons indicate the number of alerts in the vicinity of that interchange
- Circular buttons at intersections which can be selected to navigate to those intersections on the main map
- An “Alerts List” button at top which provides a list view of all alerts; an alert can be selected to navigate the main map to that alert location
- A “?” button at top which can be selected for quick help information
- A refresh button at bottom which updates traffic data on both maps

Note that due to averaging of speed data between interchanges, mini-map colors may not exactly match those on the main map.

Main map



The **main map** provides a detailed view of the 35-mile corridor, including:

- Traffic speed information in red, yellow, and green, as reflected in the map legend at top (grey is used to indicate no available speed data); users may select mainline roadways to get detailed speed for that roadway segment
- Zoom control at top, and ability to click and drag the map in any direction
- Camera, message sign, and alert icons which can be selected to access images and traffic data; camera images contain directional information stamped in the upper portion of the images; message signs often contain travel time information
- Roadway segments shown as open (grey) or closed (black)

Note that due to averaging of speed data, mini-map colors may not exactly match those on the main map.